

What's a Mashup?

Mashup (web application hybrid)
From Wikipedia, the free encyclopedia

A **mashup** is a website or web application that seamlessly combines content from more than one source into an integrated experience.

Content used in mashups is typically sourced from a third party via a public interface or API. Other methods of sourcing content for mashups include Web feeds (e.g. RSS or Atom) and JavaScript.

The etymology of this term almost certainly derives from its similar use in pop music. Many people are experimenting with mashups using eBay, Amazon, Google, Windows Live, and Yahoo! APIs.

Wikipedia Devition of a Mashup

iamCaltrain
BETA

START END Search

Menlo Park
1120 Merrill St, Menlo Park, CA

Today's next trains

Northbound

- 05:04 - 101 local in 12 minutes
- 05:39 - 103 local in 47 minutes
- 06:39 - 207 limited in 1 hour and 47 minutes
- 06:45 - 211 limited in 1 hour and 53 minutes
- 07:39 - 217 limited in 2 hours and 47 minutes

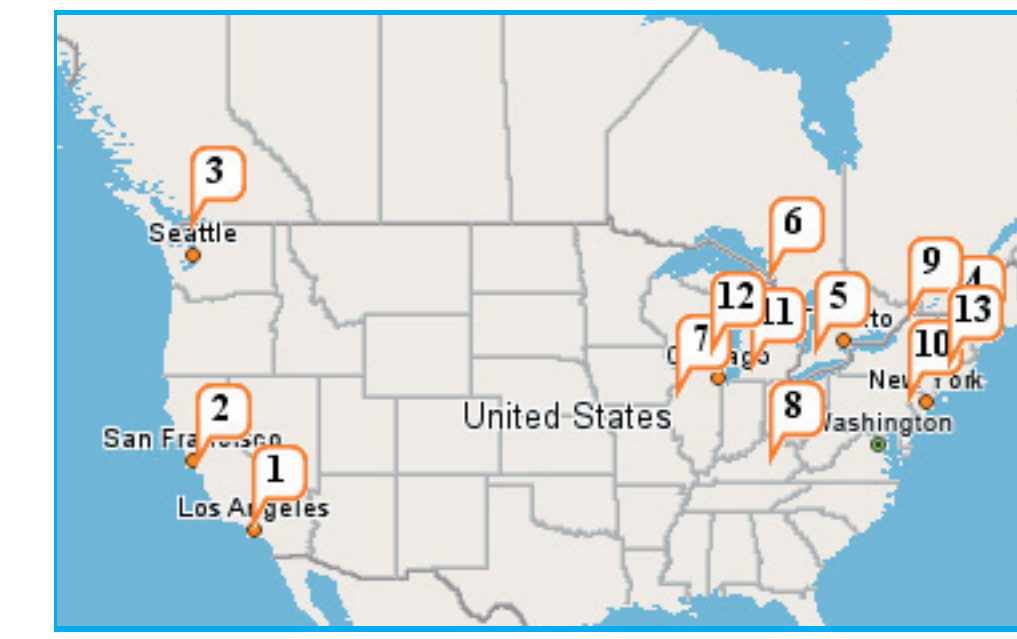
Southbound

- 05:48 - 102 local in 56 minutes
- 08:18 - 104 local in 1 hour and 26 minutes
- 06:54 - 206 limited in 2 hours and 2 minutes
- 07:23 - 210 limited in 2 hours and 31 minutes
- 07:35 - 312 baby bullet in 2 hours and 43 minutes

Plan a trip to or from Menlo Park station.

Subway Stop Information for the Bay Area (<http://iamcaltrain.com/>)

Simple Example with Code

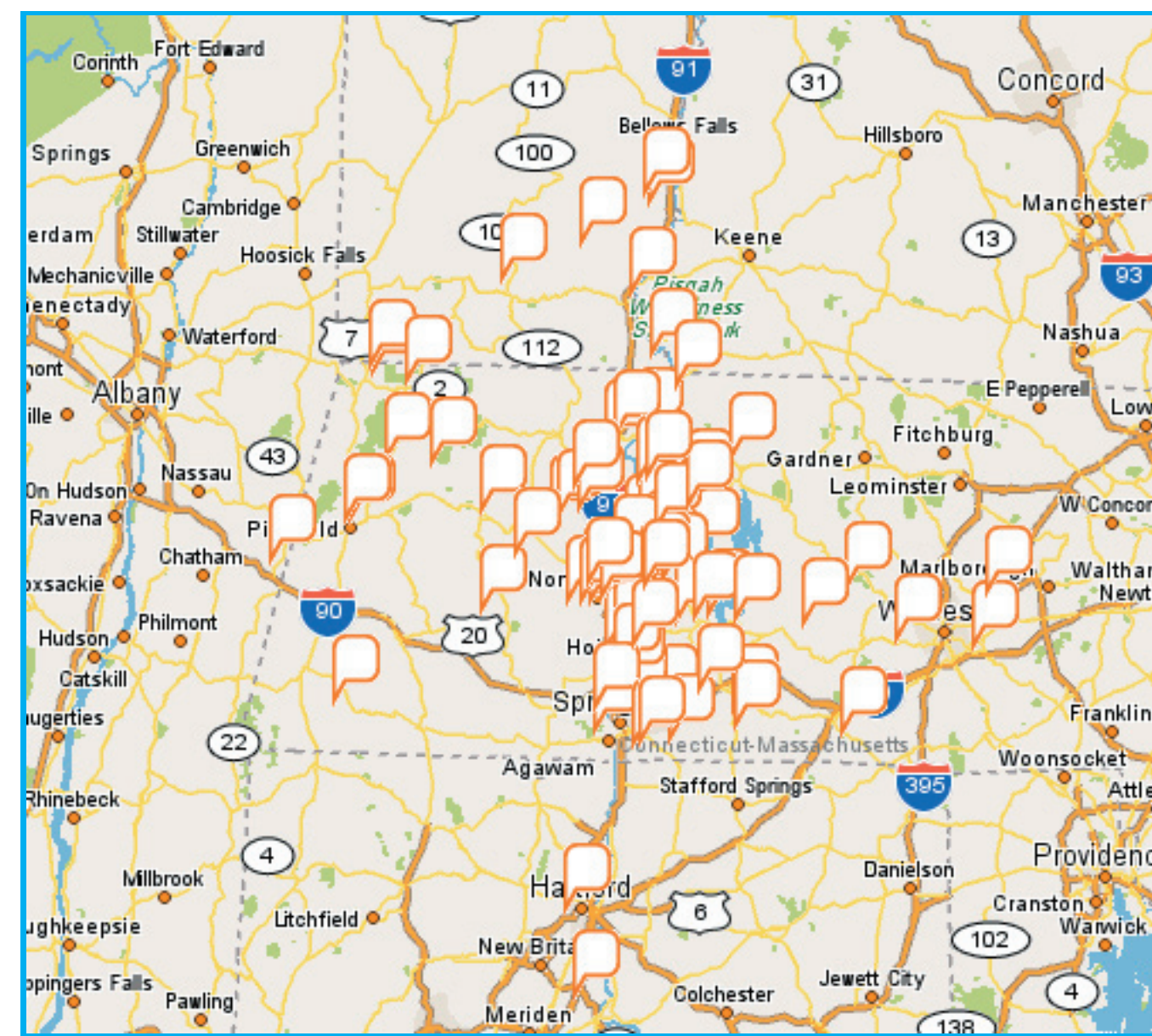


Map

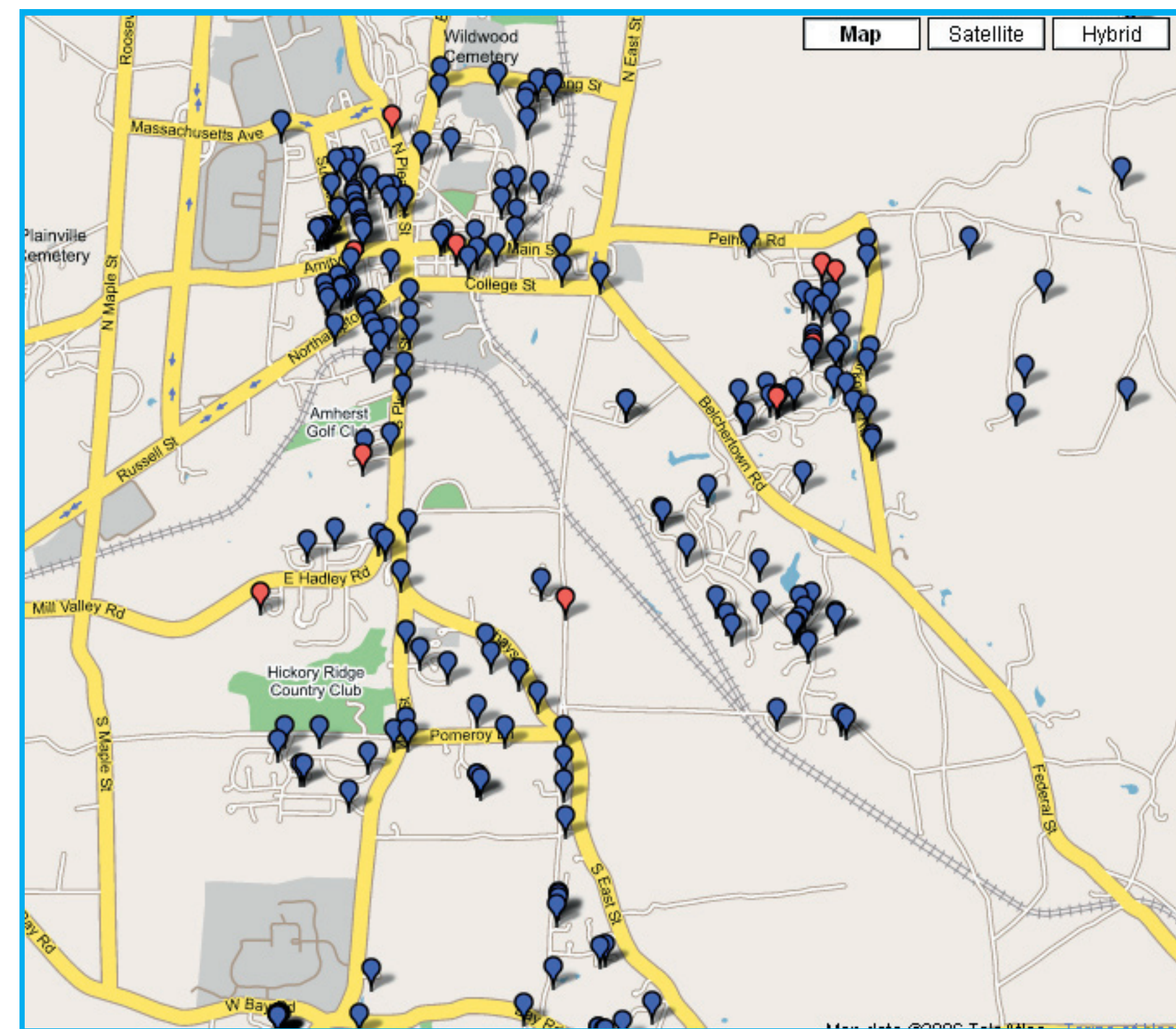
- Data
- 1|UCLA|405 Hilgard Avenue, Los Angeles CA 90095
 - 2|Stanford|Stanford CA 94305
 - 3|Western Washington University|516 High Street Bellingham WA 98225
 - 4|Dartmouth College|Hanover NH 03755
 - 5|King's College|266 Epworth Ave, London Ontario Canada
 - 6|Algonia College|1520 Queen Street, Sault St. Marie Ontario Canada
 - 7|Knox College|2 East South Street Galesburg IL 61401
 - 8|Berea College|Berea KY 40404
 - 9|St Lawrence University|23 Romada Drive, Canton, NY 13617
 - 10|Lafayette College|Easton, PA 18042
 - 11|Kalamazoo College|1200 Academy Street, Kalamazoo MI 49006
 - 12|Carroll College|100 North East Avenue, Waukesha, WI 53186
 - 13|Amherst College|Amherst MA 01002

```
<!DOCTYPE html PUBLIC "-//W3C//DTD XHTML 1.0 Transitional//EN" "http://www.w3.org/TR/xhtml1/DTD/xhtml1-transitional.dtd">
<html xmlns="http://www.w3.org/1999/xhtml">
<head>
<meta http-equiv="Content-Type" content="text/html; charset=iso-8859-1" />
<title>Oh the places I've been</title>
<script type="text/javascript" src="http://api.maps.yahoo.com/ajaxymap?v=2.0&appid=jakpwhere"></script>
<style type="text/css">
#mapContainer {
height: 600px;
width: 600px;
}
</style>
</head>
<body>
<!--The php function yahoo_geo gets the latitude and longitude of an address and dumps it to the array $loc -->
<?php
function yahoo_geo($location) {
$eq = 'http://api.local.yahoo.com/MapsService/V1/geocode';
$eq .= "&appid=jakpwhere&location=".$rawurlencode($location);
$resultfile = fopen($eq,"r");
$result = fread($resultfile, 64000);
// Now we have to search for the lat and lon in the returned xml code
$htagtag=stripos($result,"<Latitude>");
$htagtag=stripos($result,"<Longitude>");
$lat=substr($result,$htagtag+10,$htagtag-$htagtag-10);
$lon=substr($result,$htagtag+11,$htagtag-$htagtag-11);
$loc["lat"] = $lat;
$loc["lon"] = $lon;
return $loc;
}
//This reads in the contents of the file "addresses," line by line.
//Format of file is initial|name|address. The initial is on the marker and the name pops up on a click
//Canadian address must not have their postal codes--yahoo map service can't handle them
$rows =file("addresses");
//Build up a string that when executed will be javascript to dump the data into javascript arrays
$javascript=<script type="text/javascript">var initial=[]; var lat=[]; var lon=[]; var name=[];
for ( $i=0;$i<count($rows)-1;$i++)
{
$line=explode("|",$rows[$i]);
$location-yahoo_geo($line[2]);
$lat=$location["lat"];
$lon=$location["lon"];
$initial=$line[0];
$name=$line[1];
$javascript.="initial['".$i."']=" . $initial . "';";
$javascript.="lat['".$i."']=" . $lat . "';";
$javascript.="lon['".$i."']=" . $lon . "';";
$javascript.="name['".$i."']=" . $name . "';";
}
$javascript=</script>,"</script>";
//Now execute the javascript we just created
echo $javascript;
?>
<div id="mapContainer"></div>
<script type="text/javascript">
//Initial map setup
var map = new YMap(document.getElementById('mapContainer'));
// Initial map position--center of the United States
var centerpoint = new YGeoPoint(30,-90);
map.addPanControl();
// Add a slider zoom control
map.addZoomControl();
// Display the map centered on a latitude and longitude
map.drawZoomAndCenter(centerpoint, 15);
for ( $i=0;$i<?php echo count($rows)-1 ?>;$i++)
{
//Create a lat/lon object--must make it a float in javascript
var nextlat=parseFloat(lat[$i]);
var nextlon=parseFloat(lon[$i]);
var nextPoint = new YGeoPoint(nextlat, nextlon);
// Create a marker positioned at a lat/lon
var nextmarker=[];
nextmarker[0] = new YMarker(nextPoint);
// Add a label to the marker
nextmarker[1].addLabel("chold" + initial[$i] + "</chold>");
//For some reason, inside the function neither nextmarker nor i can be used except to create new var's
var shout = (function(){var index=1;var marker=nextmarker[index];return function(){marker.openSaaSWindow(name[index]);}})();
// Call onSaaSWindowEvent when the user clicks on the marker
YEvent.Capture(nextmarker[1], EventList.MouseClick, shout);
// Display the marker
map.addOverlay(nextmarker[1]);
}
</script>
</body>
</html>
```

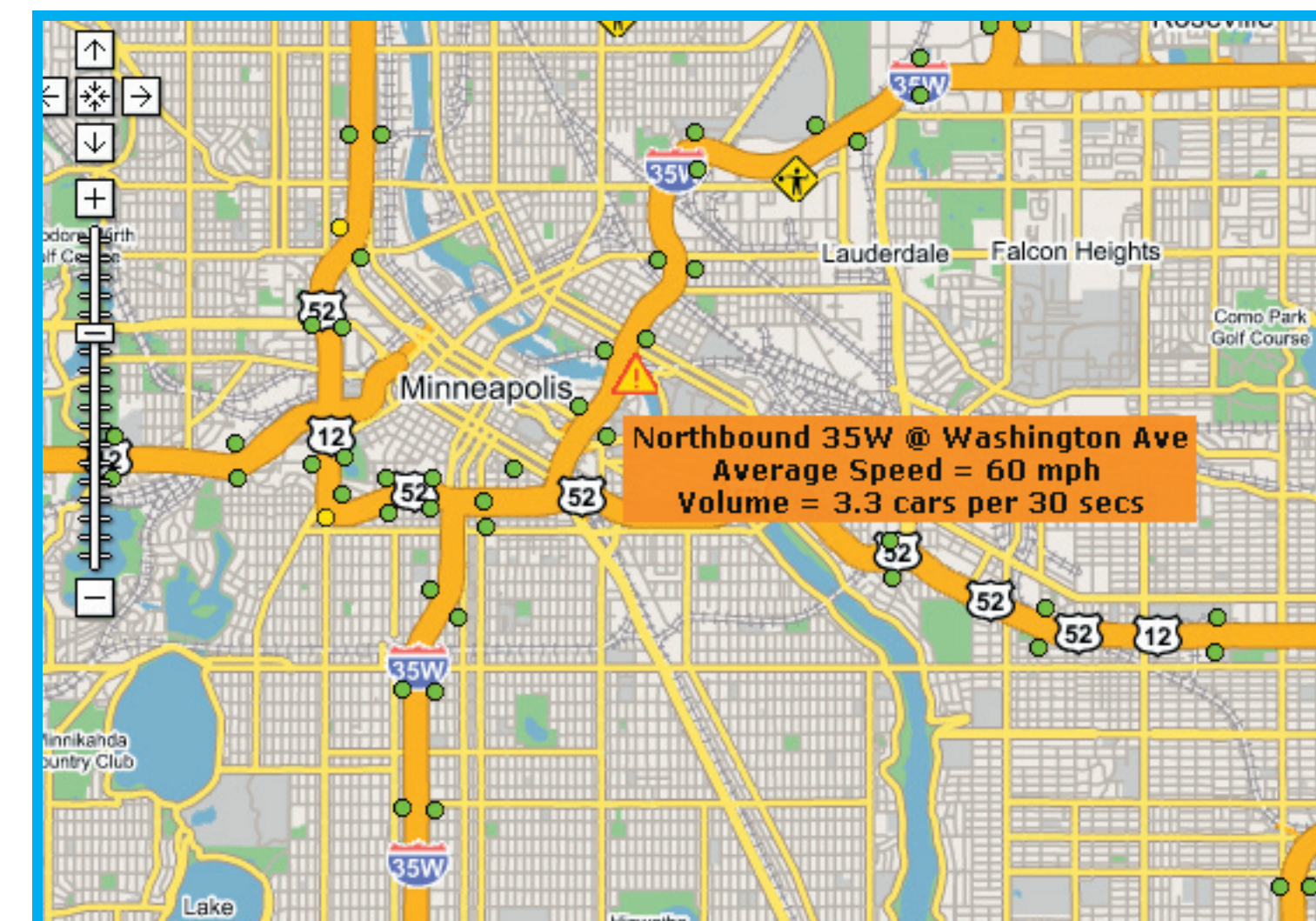
Code



Members of the Amherst Orchid Society



Political Donations in 2004 for ZIP-01002 (<http://www.es.indiana.edu/~markane/i590/contributors.html>)



Minneapolis Traffic in Real Time (<http://www.minneapolistrafficmap.com/>)

Earthquakes in the last 7 days. Magnitude greater than 2.5 (From USGS)

Magnitude: 2 3 4 5 6 7 8+

Last Week > 2.5 | Last Day | Last Week > 5

Location Mount St. Helens area, Washington
October 26, 2006 09:13:14 GMT
Magnitude 3.4
More from USGS

This Week's Earthquakes (<http://www.robogear.biz/earthquake/>)

LABS
gothamist™

Gothamist is a website about New York. More Editor: Jan Chung Publisher: Jake Dobkin

asthamist | labs | contribute | favorites

Introducing Gothamist Maps, the best way to see what's going on and where *right now*.

LATEST INCIDENTS

- Overturned Auto | Pacific St & Ralph Ave Brooklyn, NY | 11/1/2006 3:46 a.m.
- All Hands | Quincy & Bedford Brooklyn, NY | 11/1/2006 2:28 a.m.
- Stabbing | 131 Broome Street Manhattan, NY | 11/1/2006 12:34 a.m.
- Stabbing | 410 Grand Street Manhattan, NY | 11/1/2006 12:33 a.m.
- Porn Job | 199 St & 100 Ave Queens, NY | 10/31/2006 11:37 p.m.
- Officer Assist | 14th & Broadway Manhattan, NY | 10/31/2006 10:28 p.m.
- Fatal Pedestrian Struck | Harlem River & 155 St Manhattan, NY | 10/31/2006 10:14 p.m.
- Shooting | Montgomery St & Schenectady Ave Brooklyn, NY | 10/31/2006 10:04 p.m.
- Stabbing | 2048 West 9 St Brooklyn, NY | 10/31/2006 10:01 p.m.
- Shooting | East 184 St & Valentine Ave Bronx, NY | 10/31/2006 10:01 p.m.

Recent Crimes in NYC (<http://gothamist.com/labs/map>)

Building Filter

- Parking Garages
- Student Housing
- Libraries
- Recreation/athletics
- Amenities
- Bus stops
- Food/Dining
- Lodging
- Places of interest
- Art galleries, displays
- Wireless access
- Computing centers
- Hospital/Medical
- Post Office
- Freshman and Visitors
- Admissions office
- Books, Supplies

OSU Campus Map (<http://www.osu.edu/map/google.php>)