

Cityscapes:
An Online Discovery Tool for
Urban and Cultural Studies

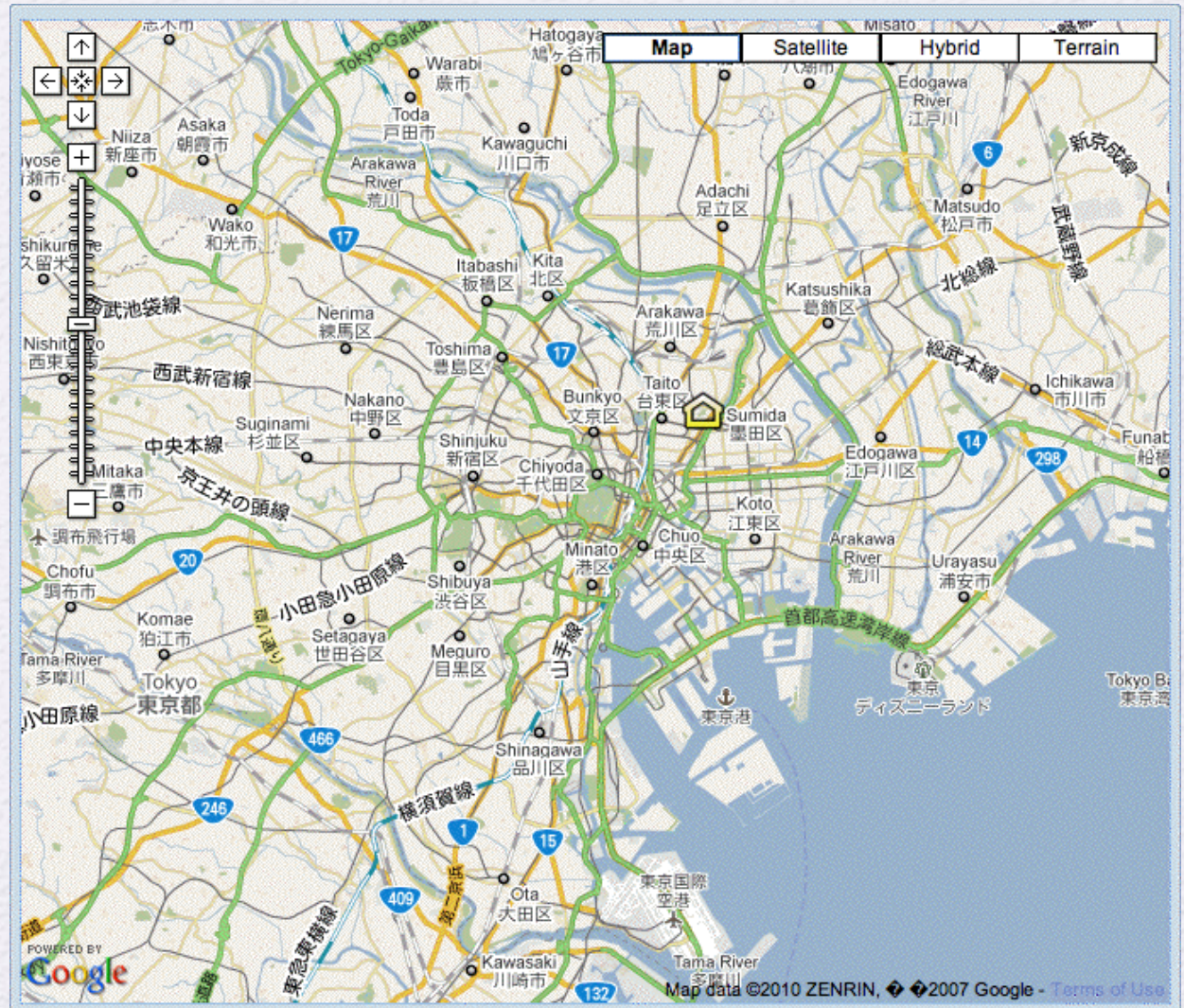
Andy Anderson
Academic Technology Services



Cityscapes is Geohistorical

- Allow students to investigate a city over time, e.g. Tokyo:

- 1680
- 1799
- 1858
- 1892
- 1945



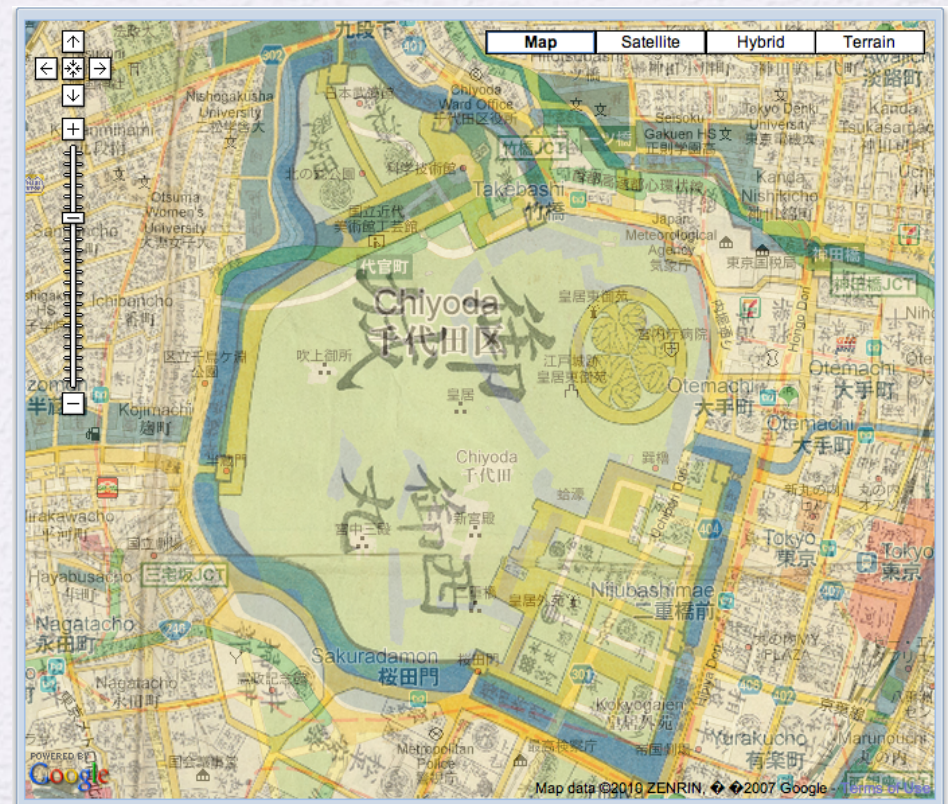
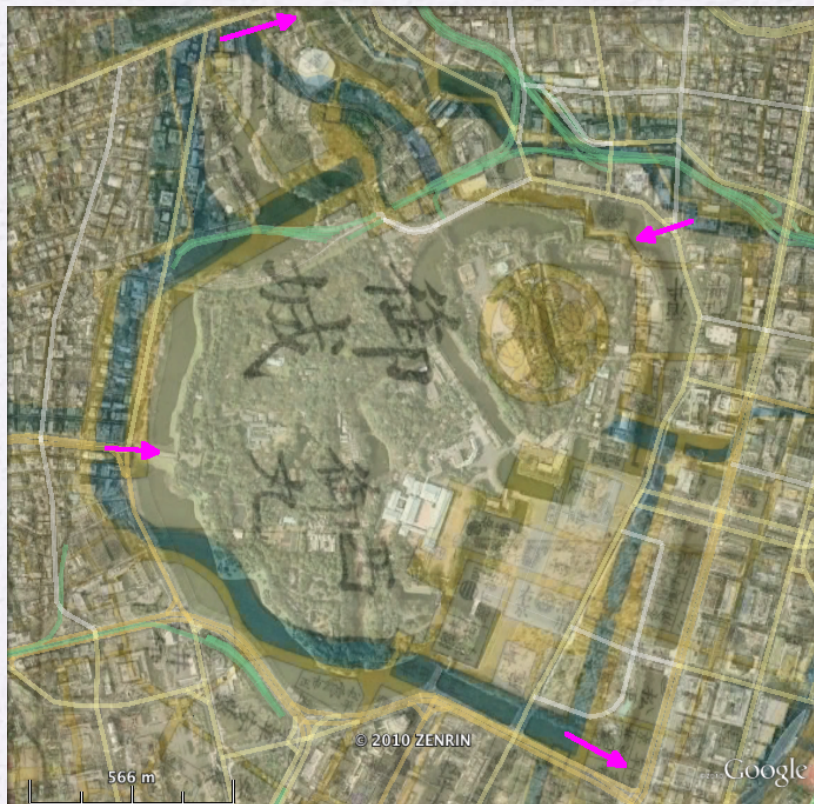
Cityscapes Map Platform

- Google Map Open API:
 - Web-based
 - Zooming
 - Layering
 - Transparency
 - Markers
 - Satellite/Terrain



Cityscapes Historical Maps

- Historical maps are closely georeferenced using ArcGIS
Google Earth:
Cityscapes:



- Converted to Google format with open source Amherst GTiler

Cityscapes Location Balloons

- Location balloons provide structured media inclusion

Add a New Location

Location Name:

Location Type:

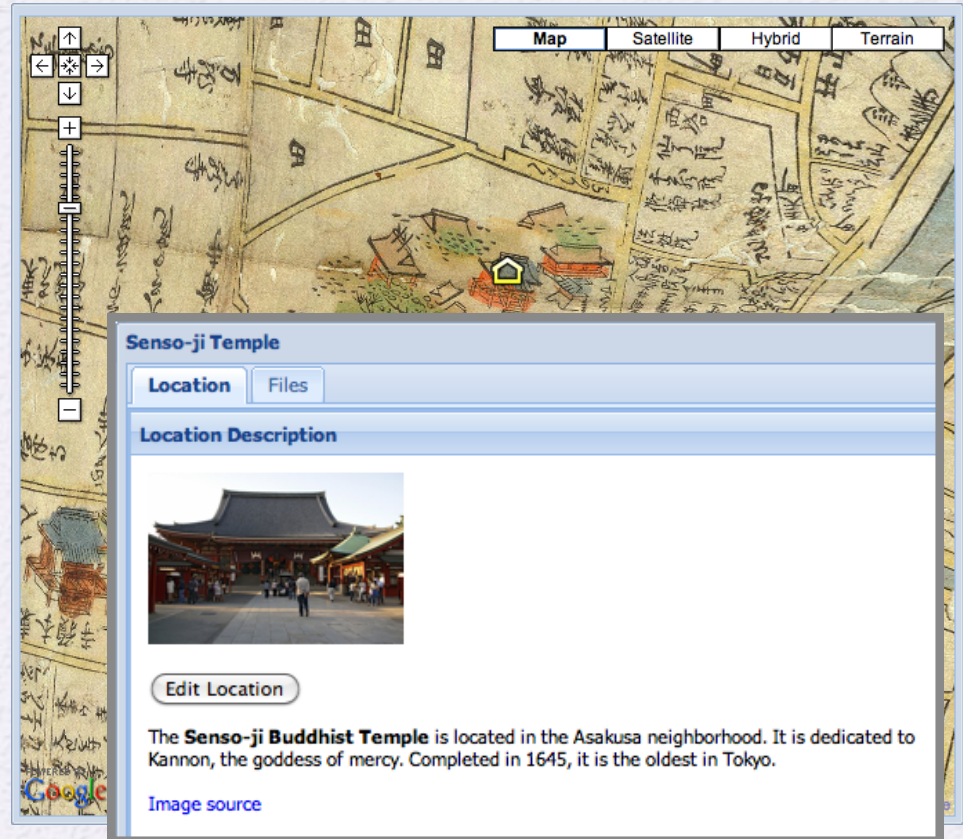
Location Description:

B *I* U **A** **A** **A** **ab**

The **Senso-ji Buddhist Temple** is located in the Asakusa neighborhood. It is dedicated to Kannon, the goddess of mercy. Completed in 1645, it is the oldest in Tokyo.

[Image source](#)

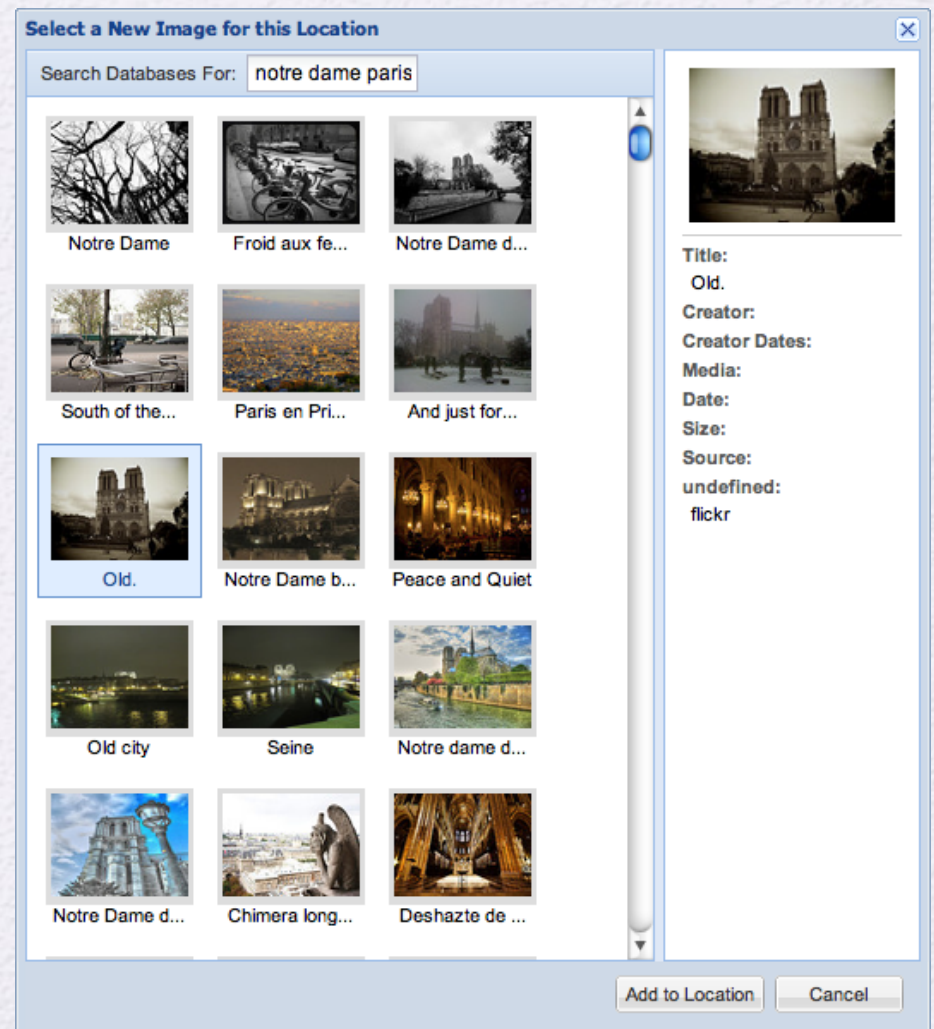
Image File: Asakusa_sen...4s3200.jpg



- Dialogues don't require knowledge of HTML.
- Open source: Amherst [aMapApp](#); [Ext JS](#), [PHP](#), and [MySQL](#).

Cityscapes Multimedia

- Location balloons link to an image database using thumbnails, and display them in a dedicated viewer.
- Images can be from different collections:
 - DigiTool (Amherst)
 - Luna (Smith College)
 - Flickr (students & others)



Cityscapes Location Blogging

- Location balloons can have blogs associated with them, letting students converse about the location and included media.

The image displays two overlapping windows from the Cityscapes application. The foreground window is titled 'New Blog Entry' and contains the following elements:

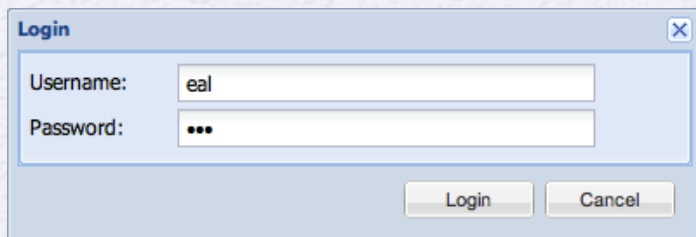
- Title:** A text field containing 'Senso-ji Temple Visit'.
- Entry:** A rich text editor with a toolbar showing options for font color, background color, bold, italic, underline, text color, and text background color. The text area contains the sentence: 'During my Junior year abroad in Tokyo, I visited the Senso-ji Buddhist Temple. It has a traditional architecture for a Japanese temple and |'.
- File to Upload:** A section with a 'Choose File' button and the text 'no file selected'.
- Buttons:** 'Submit' and 'Cancel' buttons at the bottom right.

The background window is titled 'Location Blog' and contains:

- Buttons:** 'Create Blog Entry' and 'Move Newest to Top' buttons.

Cityscapes Access Control

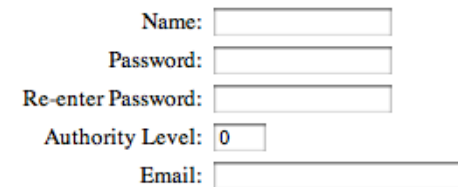
- Privacy of student projects is important.*
- *aMapApp* location balloons are created *outside* of Google maps, so their content is *not* web-searchable.
- Built-in access control and groups for classes.



A small login dialog box with a title bar 'Login' and a close button. It contains two input fields: 'Username:' with the text 'eal' and 'Password:' with three dots. At the bottom are 'Login' and 'Cancel' buttons.

aLogin Authentication System Administrator Functions

Add User



Form for adding a user with fields for Name, Password, Re-enter Password, Authority Level (set to 0), and Email.

Add

Edit User



Form for editing a user with a Name field.

Edit

Delete User



Form for deleting a user with a Name field.

Delete

Accept New User Requests

[Go to New User Requests Page](#)

Display All Users

[Go to Display All Users Page](#)

* e.g. Family Educational Rights and Privacy Act (FERPA)

Cityscapes Tokyo

<http://ats.amherst.edu/tokyodemo>

- *Reinventing Tokyo: The Art, Literature, and Politics of Japan's Modern Capital*
- “Tokyo is the political, cultural, and economic center of Japan, the largest urban conglomeration on the planet, holding 35 million people.... Since its founding 400 years ago, when a small fishing village became Edo, the castle headquarters of the Tokugawa shoguns, the city has been reinvented multiple times...”
- Amherst College
Professors Morse, Maxey, Van Compernelle

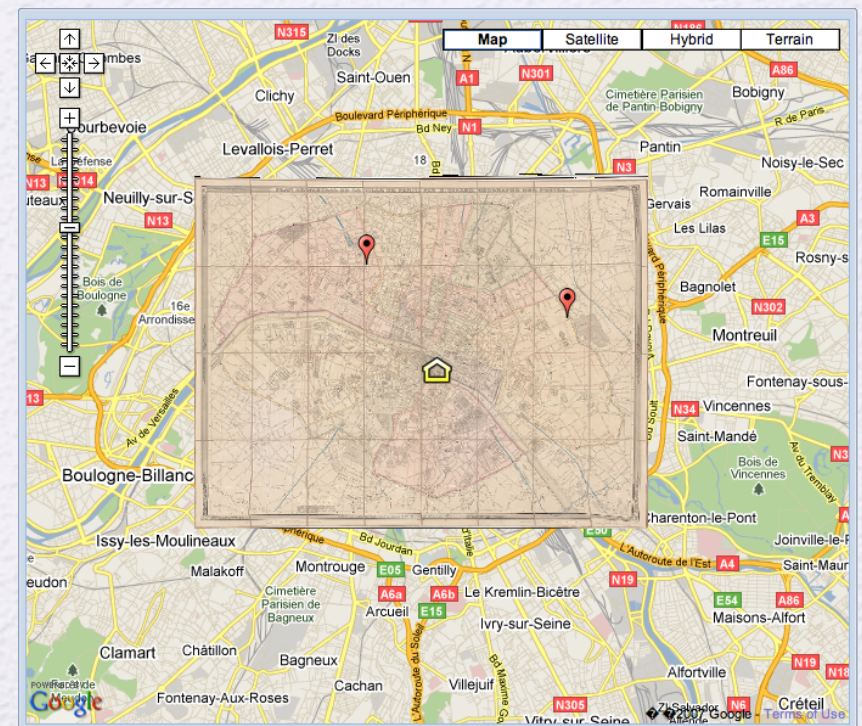


[Fishing Village, Flying Crane,
and Mount Fuji](#)

Cityscapes Paris

<http://ats.amherst.edu/parisdemo>

- *Pariscape: Imagining Paris in the Twentieth Century*
- “Paris has been for centuries one of the exemplary sites of our urban sensibility, a city that has indelibly and controversially influenced the twentieth-century imagination. Poets, novelists and essayists, painters, photographers and film-makers: all have made use of Paris and its cityscape to examine relationships among technology, literature, city planning, art, social organizations, politics and what we might call the urban imagination.”
- Amherst College
Professor Rosbottom



Cityscapes Paris

<http://ats.amherst.edu/parisdemo>

- *Colloquia in French Studies: Paris, a Multi-Layered City*
- “An exploration of the cultural and urban development of Paris across time and in space with an emphasis on the 19th and 20th centuries. We will use an interactive digital platform to reconstruct the spaces, both real and imaginary, featured in novels, poetry, short stories, popular songs, visual documents, and maps that have evoked the city throughout its history. Works by Corneille, Maupassant, Baudelaire, Apollinaire, Desnos, Modiano, Vargas, Gavalda.”
- Smith College
Professor Visentin

[Boulevard des Capucines, Paris](#)
[Claude Monet, 1873](#)



Cityscapes Team

- **Inspiration:** Professors Sam Morse and Hélène Visentin
- **Organizer:** Scott Payne, Director of [Academic Technology Services](#) at [Amherst College](#)
- **Historical Map Georeferencing:** [Andy Anderson](#), ATS; Zoë Zaferiou and Jon Caris, Smith College
- **[GTiler](#) Creation:** [Andy Anderson](#), ATS
- **[aMapApp](#) Creation:** Paul Chapin, ATS
- **Image Database Interface:** Miodrag Glumac, ATS
- **Historical Maps:** Smith College, Harvard University, University of California at Berkeley, David Rumsey Map Collection