



Lava eruption: very low volatile content



Lava eruption: low volatile content



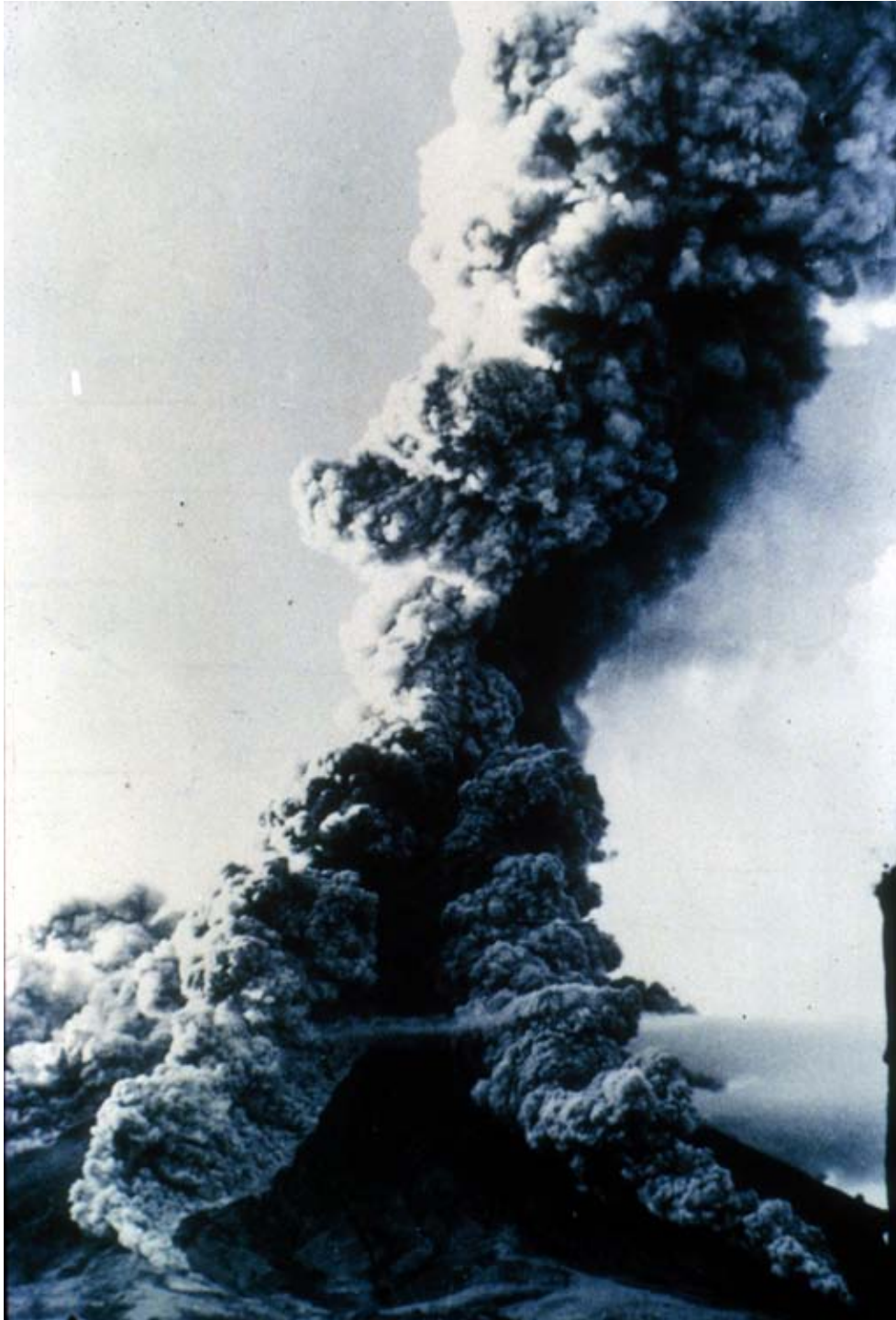
magma flowing under solid crust



Lava fountain: low volatile content



Lava flow: low volatile content



ash fall

Pyroclastic
eruption: high
volatile content

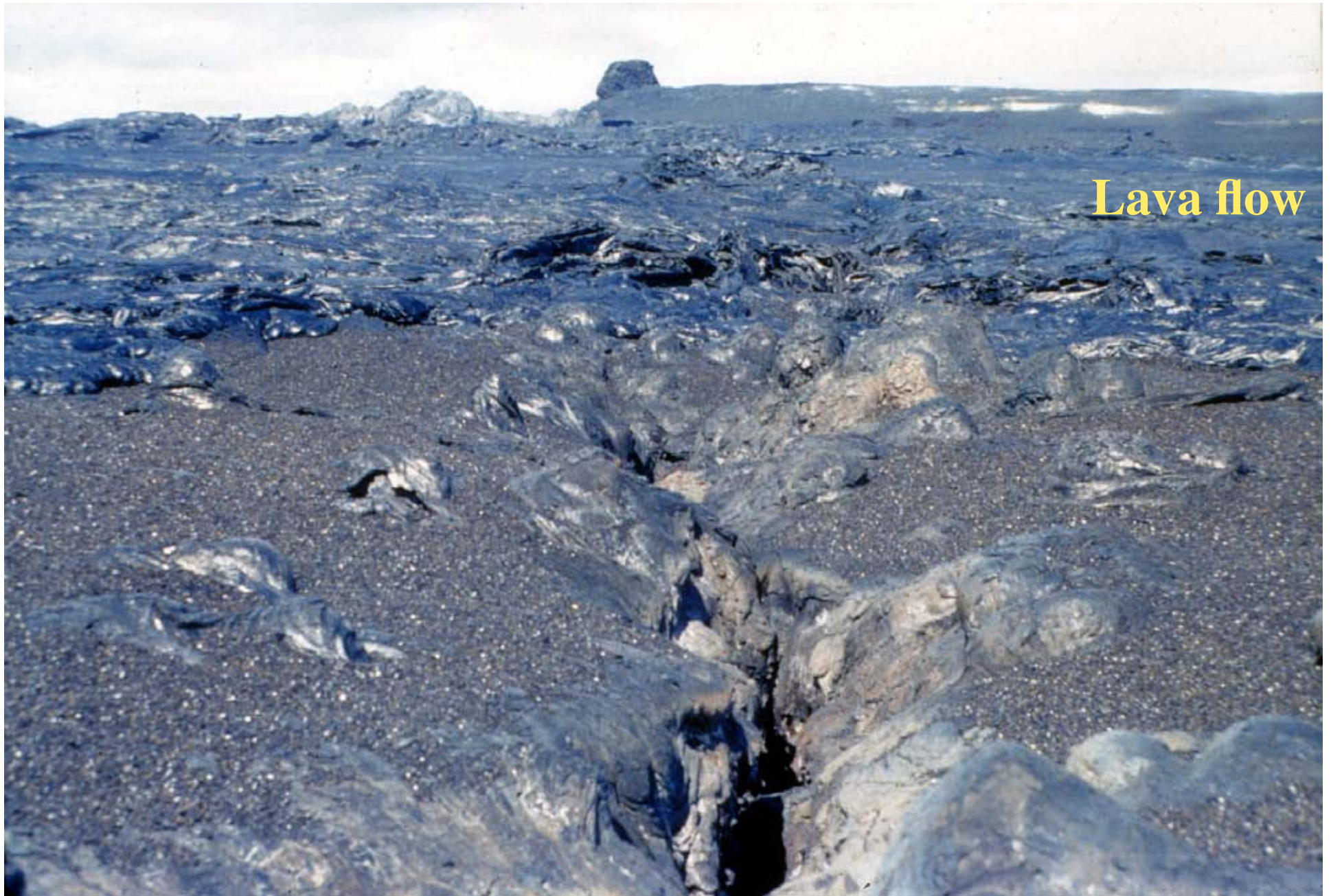
ash flow



ash flow: high volatile content

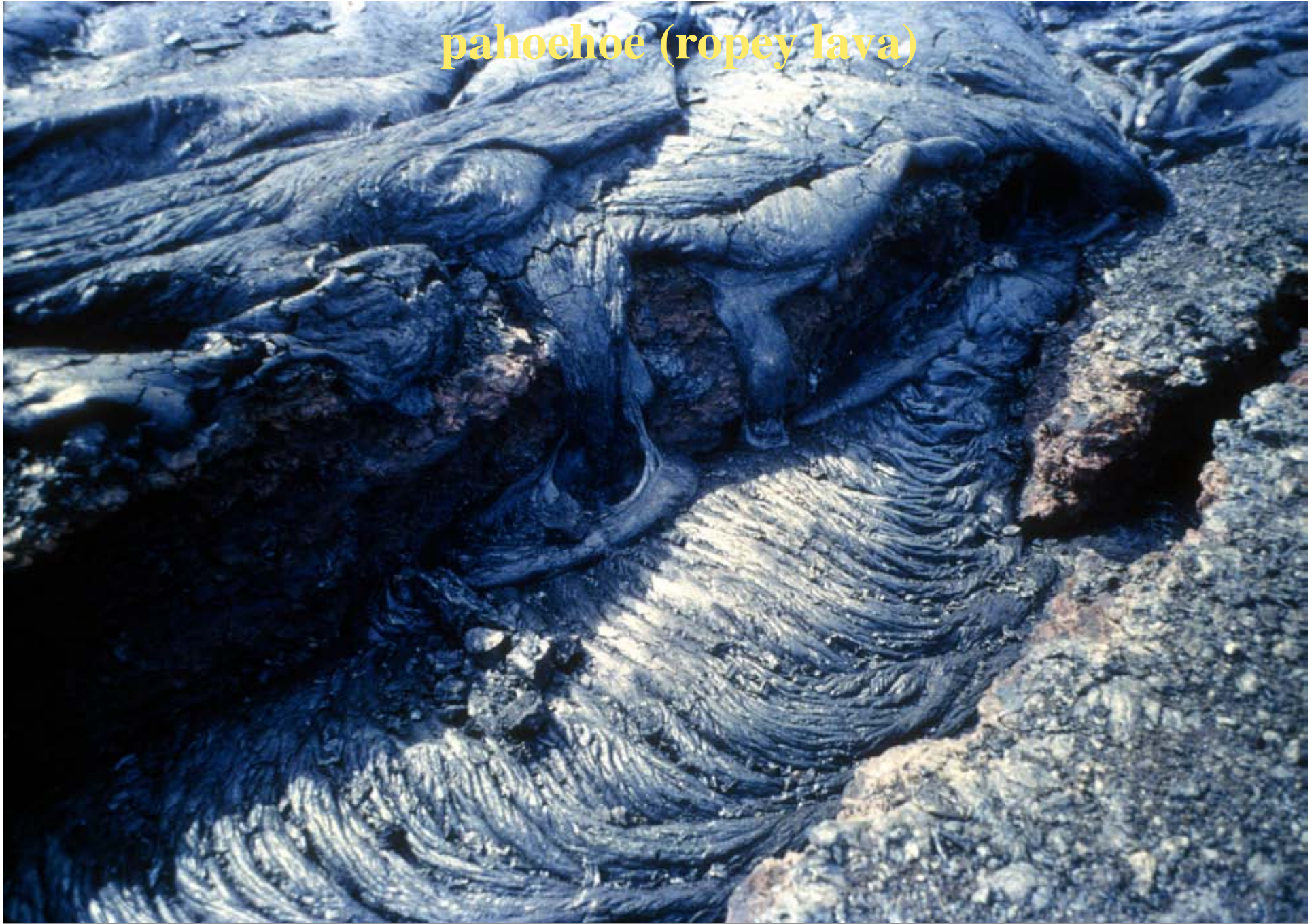


edge of flow



Lava flow

pahoehoe (ropey lava)





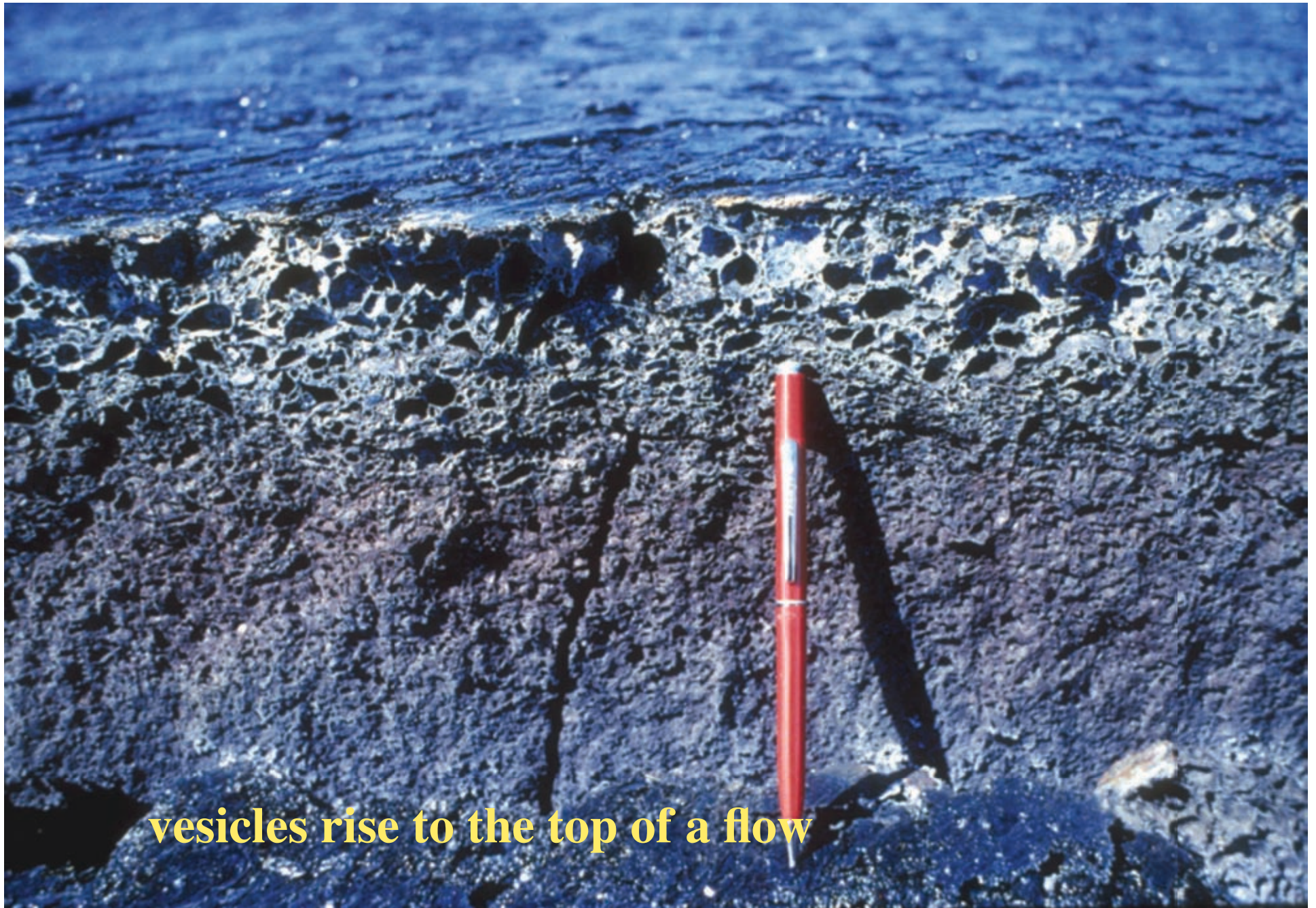
a a (blocky) lava flow



stack of lava flows



columnar joints



vesicles rise to the top of a flow



Ash deposits



Coarse volcanic ash: falls close to vent



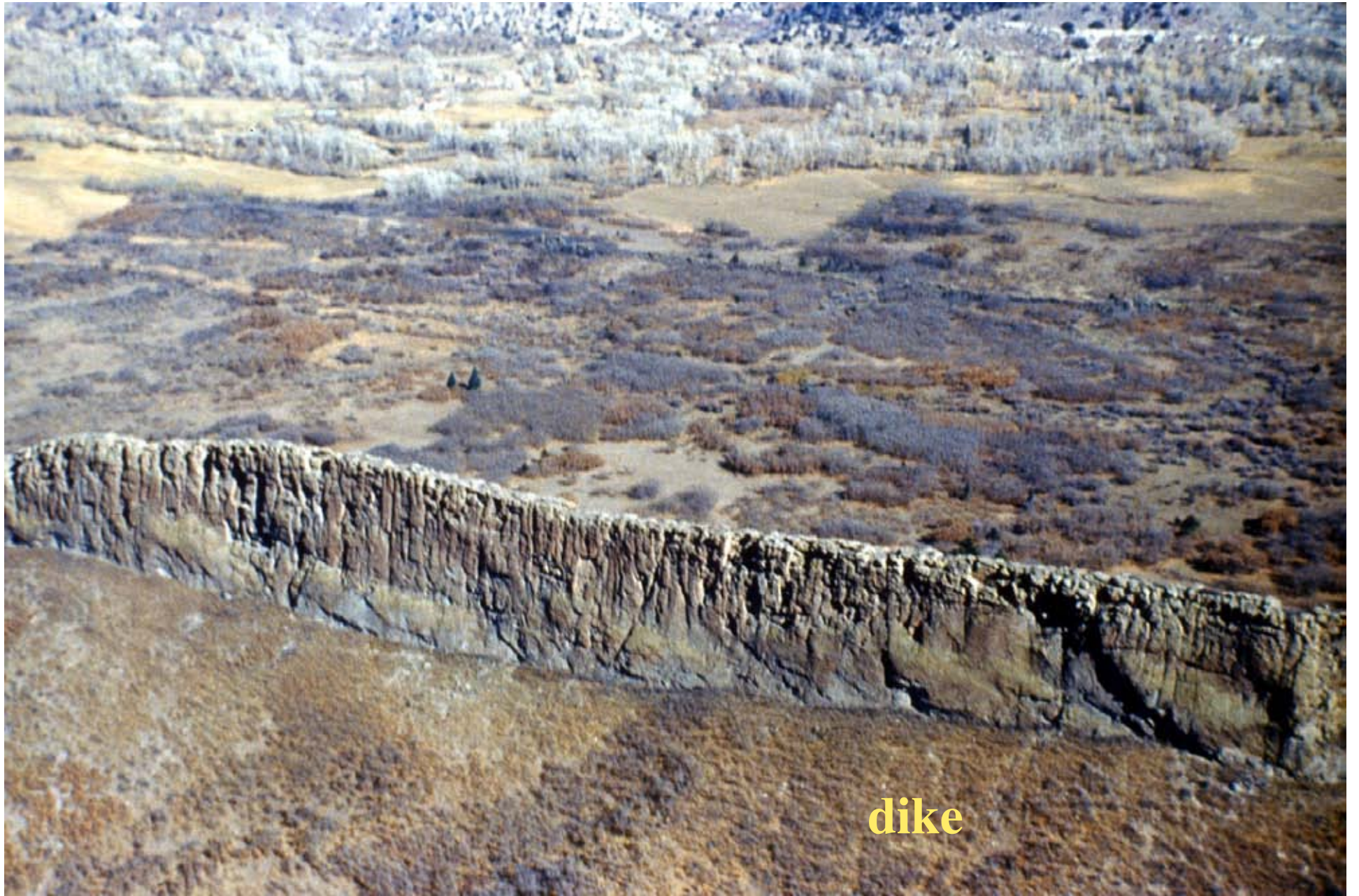
Ash flow deposits: welded tuff



circular intrusive



**dike: planar
intrusive that
cuts across
country rock**



dike



sill: planar intrusive that is parallel to country rock



magma intruded into country rock



roof of intrusive



Batholith:
large intrusive complexes