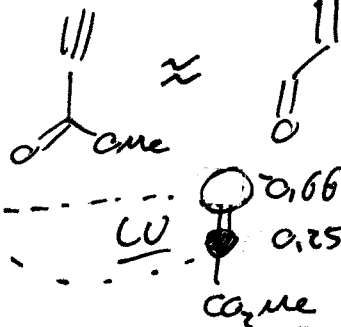
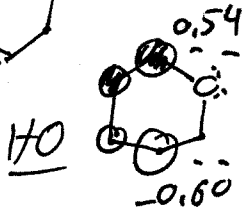


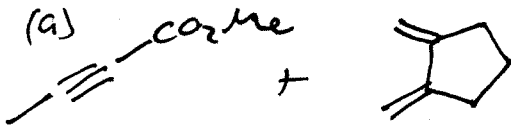
note ring junction must be cis, so prod is chiral - draw the other enant.

(d)



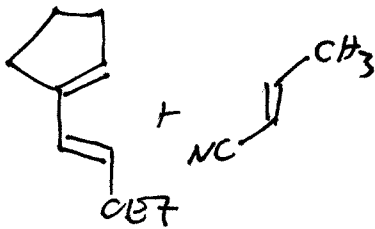
Hückel theory only treats the π conjugated with the $\gamma=0$

2. (a)



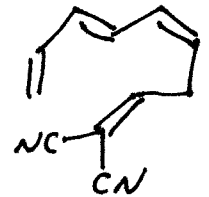
(why not + ?!)

(b)

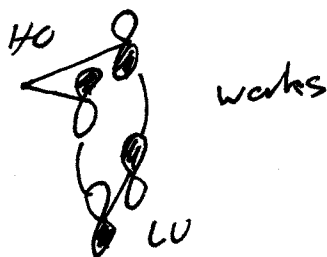
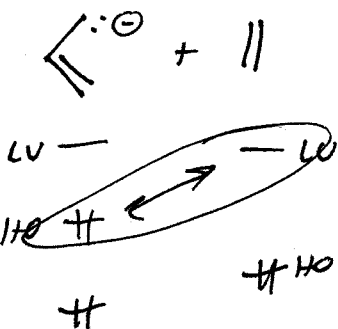


verify that this would actually work - regiochem correct? Endo correct?

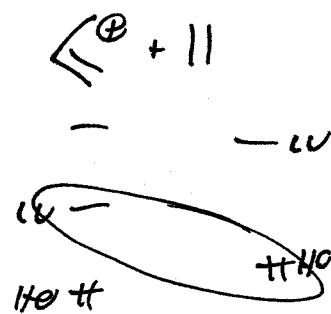
(c) Intramolec.



3.



(LUMO-H_o works also, but less important)



nope other pair doesn't work either