

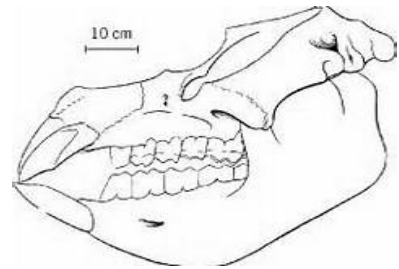
The Who's Who of the Beneski Museum Scavenger Hunt (Ages 9+)

Explore the main floor to discover the answers to the questions 1-4

NUMBER 1. This Amherst College faculty member was responsible for what was in the Mid 1800s the largest collection of minerals and meteorites in the country. In addition he was responsible for bringing the **Mammut americanum (American Mastodon)** to Amherst College.

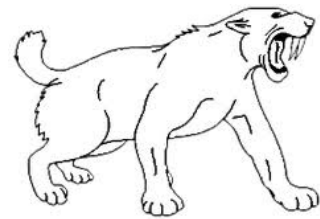
What was this faculty member's name? _____

NUMBER 2. This Amherst College faculty member was the author of *The Evolution of the Horse and Hunting Extinct Animals in the Patagonia Pampas*. Many of the large mammal and dinosaur specimens in our collection are attributed to his work. On the main floor you can find his name associated with the **Columbian Mammoth** Bogs and Swamps and the **Patagonia** display case.

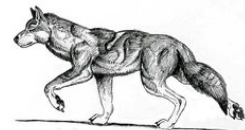


What was this faculty member's name? _____

NUMBER 3. The **Saber Tooth Cat** and **Dire Wolf** are wonderful examples of carnivores that lived during the last ice age. These two animals were preserved in the La Brea tar pits near Los Angeles California. These specimens have been in our collection for over 50 years. Rather than being collected by Faculty, these specimens are on exchange.



What museum did we exchange with to bring these specimens to Amherst?



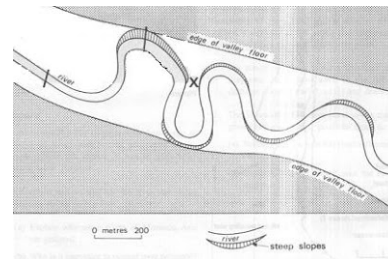
NUMBER 4. The **Main gallery** of the Beneski Museum was made possible by two generations of Amherst Alums. We "Hope" you can find the plaque.

What is the name given to the **Main floor gallery**? _____

The Who's Who of the Beneksi Museum Scavenger Hunt (Ages 9+)

Explore the Upper floor to discover the answers to the questions 5-9

NUMBER 5. The 2nd floor painting above the geologic map and rock samples depicts the **Connecticut River Valley** with north to the left and south to the right. The river is flowing north to south or to the right. Please note that this is a painting of our valley with major roads, buildings and electrical lines removed, note farm fields were maintained.



What major water feature is pictured in the painting just before the river flows between mountains? _____



NUMBER 6 (a & b). A second painting on this floor depicts our valley from a period **190 Million Years Ago**. Our valley was very different at that time. We had very high mountains nearly 5,000 feet high. Large lakes formed in the valley where fish were abundant. In the foreground of the painting you can see pillow lava flows on the surface. These lavas tilted many years later and became the Holyoke range and Mt. Tom. You will notice that dinosaurs are painted walking across the cooled lava.

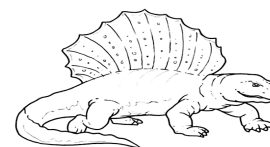
(a) How many Dinosaurs can you see in this painting? _____

(b) Who is/are the artist(s) who painted the paintings found on the 2nd floor?

NUMBER 7 . While on this floor you will notice a model that shows our area toward the end of the last **ICE AGE**. During the end of the last Ice Age, a glacial lake formed in the Connecticut River Valley.

What was the name of this very large lake? _____

NUMBER 8. The **Edaphosaurus sp. (sail back)** was found on a joint expedition with Amherst and what other institution?



NUMBER 9. The **2nd Floor gallery** of the Beneksi Museum was made possible an Amherst Lacrosse family 83'. We "Bet"sy you can find the plaque.

What is the name given to the **2nd floor gallery**? _____

The Who's Who of the Beneksi Museum Scavenger Hunt (Ages 9+)

EXTRA SPACE (Take a moment and sketch your favorite specimen)